

NFC PROGRAMMER

PRODUCT DATASHEET

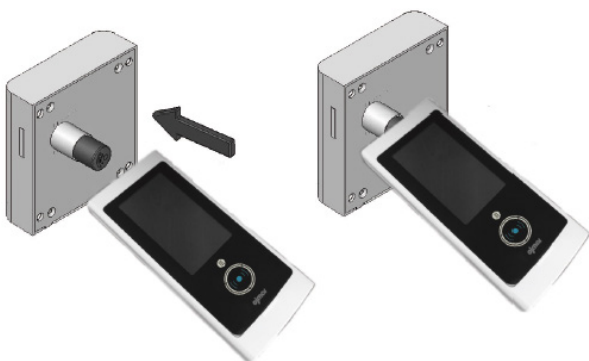
1. MAIN FEATURES

Description

The NFC programmer is a device for configuration and maintenance of the locks.

This device can operate in autonomous mode configuring wearables so occasional users can close a free type lock. In addition to this, lock can be tested by NFC in order to know its status and battery level.

NFC programmer also has the option to be connected to the Ojmar Software, being able to manage the whole facility, starting on configuring the locks and finishing with the audit of these locks too.



Configuration

- Fully configurable by end user.
- Access permission assignment via software.
- Locks configuration via Software.
- 3rd party SW integration via SDK.

Compatibility

- Metal Doors.
- End customer wearables.

Maintenance

- Low battery indicator.
- FW update via USB.
- Event Reading via Software.
- Lock status audit via Test.

Security

- Encrypted communications.
- Vandalism-proof: Electronic components and batteries are covered inside the lock.

2. TECHNICAL SPECIFICATIONS

AUTHENTICATION MODES	Authentication mode	RFID
	Supported technologies	MIFARE® (DESFire EV1 & EV2, Ultralight, Ultralight C, Classic1K/4K 4B and 7B UID – ISO/IEC 14443)
	Reading	UID / Sector / Application / File / Page
	Wearables	RFID cards, wristbands, FOBs, Technogym key, Stickers & Transponders
	Reading range	Up to 6 cm
USAGE MODES	Autonomous Mode	<ul style="list-style-type: none"> • Wearable recording for 1 free lock • Facility wearables reading • Test to the locks in order to know its status and battery level
	Connection to PC Mode	<p>All the functionalities from autonomous mode plus:</p> <ul style="list-style-type: none"> • Possibility to configure the whole locks from the facility • Events reading from locks • FW update for facility customization • Dedicated type cards recording
USER INTERFACES	Notifications	<ul style="list-style-type: none"> • Messages on screen • Buzzer
	Alarms	Low battery indicator
COMMUNICATION INTERFACES	Communication standard	NFC
	Encryption type	AES 256
	Range	2cm
	Number of maximum connections	1
	Communication standard	USB
	Communication rate	9600 bauds
	Operative systems	Windows 98, 2000, Vista, XP, 7,8,10, Linux
POWER SUPPLY	Power supply	5VDC
	Battery life	2 rechargeable batteries by USB (5.000 mAh)
MECHANICAL CHARACTERISTICS	Dimensions	202 mm x 89 mm x 39 mm
	Weight	380 gr
	Touch screen	4,3 inches
	Housing	Grey (RAL 7035)

ENVIROMENTAL CONDITIONS	Temperature From -10°C to 50°C (interiors)
	Humidity < 97% (condensation free)
	Protection type IK09 / IP55

3. COMPATIBILITIES

- OTS10.
- OTS20.
- OTS20 Batteryless.
- NLX155.
- NLX165.
- NL1 Integra.